

A REQUEST FOR PROPOSAL FOR PROFESSIONAL SERVICES CONTRACT

Department of Highways Professional Services Procurement Bulletin 2024-10 Jessamine/Woodford | 7-80108 | KY-169

This document constitutes a Request for Proposals for a Professional Service Contract from qualified individuals and organizations to furnish those services as described herein for the Commonwealth of Kentucky, Department of Highways.

I. PROJECT DESCRIPTION

County - Jessamine/Woodford
Route - KY-169
Item No. - 7-80108.00
Project Description - Improve KY-169 from north of Clear Creek Road in Jessamine County to north of KY-1967 in Woodford County. (Jessamine MP 18.640 to MP 19.180 / Woodford MP 0.00 to MP 3.540)

II. PROJECT INFORMATION

Project Manager - Robin Sprague, P.E.
User Division - Highway Design
Approximate Fee - \$550,000 Preliminary Engineering & Environmental Services (Lump Sum)
Project Funding - State Funds (SPP)
Project Length - Approximately 4.08 miles

III. PURPOSE AND NEED

KY-169 is a Rural Major Collector connecting Nicholasville and Versailles. Currently, the facility consists of narrow lanes with little to no shoulders and inadequate sight distance in spots. Based on a Collision analysis from the Kentucky State Police Collision Analysis Tool in both counties, from 2017 to 2021, there were a combined 80 collisions resulting in a total of 2 fatalities, 13 injuries, and 66 counts of property damage. Five of the collisions involved commercial vehicles. The Woodford County portion of this project has seen the majority of the reported collisions and has a tabulated EEC of 61.2 and a LOSS rating of 4.

The project should improve the safety and driver expectation through aesthetically appealing improvements consistent with the reconstruction project near Eckert's Orchard, based on design and target speed, on KY-169 from north of Clear Creek Road in Jessamine County to north of KY-1967 in Woodford County while minimizing right of way acquisitions, impacts to adjacent properties, and the surrounding environment.

IV. DBE GOAL

The Consultant team may include a DBE Participation Plan with their Response to Announcement to help the Department meet the 11.95% DBE goal established by FHWA. The plan would demonstrate how DBE companies will be mentored or used to assist in the area(s) pertaining to this contract. If included, an additional page will be allowed in the Project Approach (Section 7) to exhibit this plan. No additional points will be provided in the Evaluation Factors for the DBE Participation.

V. SCOPE OF WORK

The selected Consultant will be responsible for Preliminary Engineering and Environmental Services including the preparation of engineering studies, identification of appropriate typical sections, identifying any utility impacts, performing drainage design, developing dependable cost estimates, conducting and preparing documents for public meetings, and providing documents and/or plans to be used in obtaining an approved Environmental Document.

This project may be advanced to Final Design upon the completion of Preliminary Engineering and Environmental Services with a Contract Modification. The selected Consultant will then be required to provide engineering services to perform Final Roadway and Structural Design, including the preparation of any design studies, drainage design, right-of-way plans, construction plans, traffic control plans, and cost estimates as well as any other services that KYTC chooses not to perform with in-house forces.

VI. SPECIAL INSTRUCTIONS

The Department may retain any of the advertised services to be performed by in-house state forces.

Instructions for Response to Announcement can be found at:

<https://transportation.ky.gov/ProfessionalServices/Pages/Respond-to-an-Announcement.aspx>

VII. AVAILABLE STUDIES

[DNA Study – Jessamine/Woodford | 7-80108 | KY-169](#)

VIII. METHOD OF DESIGN

The selected Consultant shall utilize the most recent CADD Standards for Highway Plans Policy in the development of the highway plans. Refer to the 2019 CADD Standards for ORD V4 Project Development Memo for information pertaining to the latest CADD Standards and plan submittal.

IX. ENVIRONMENTAL SERVICES

Most necessary Environmental Services are expected to be provided by the Consultant. Based on preliminary discussion with the project team and all currently available environmental information for the proposed project location, we anticipate the required environmental document to be no higher than a Categorical Exclusion Level 2. The final environmental document may be

elevated (or reduced) to a different level of environmental documentation if environmental investigation leads to an alternative conclusion or changes in ROW occur.

Prequalification of various Environmental Services are required to be identified in the Consultant's Response to Announcement.

X. PHOTOGRAMMETRIC SERVICES

The Department will provide mapping and will furnish manuscripts in ORD format. Statewide Elevation data and Aerial photography can be found at the following link [KyFromAbove - Kentucky's Aerial Photography & Elevation Data Program](#). The selected Consultant shall supplement this information with conventional surveying as determined during project scoping.

XI. STRUCTURE DESIGN

Structure Design is not anticipated for Preliminary Design. When the project advances to Final Design and if the selected Consultant is retained for Final Design services, the selected Consultant shall do the necessary engineering services to submit to the KYTC an Advanced Situation Folder(s) for the appropriate structure(s). The selected Consultant may be responsible for any necessary Structure Design services. Structure Design of the proposed structure(s) may be added as a Contract Modification. Prequalification in the area of Structure Design is not required to be identified in the Consultant's Response to Announcement.

XII. GEOTECHNICAL SERVICES

The selected Consultant may provide all Geotechnical Services required for the project. The Preliminary Design contract may include preliminary geotechnical services to review available geological, mining, or other geotechnical information that could influence the selection of the preferred alternate. Geotechnical services necessary for the completion of Final Design may be added by contract modification at the appropriate time. At any time, if the Department has the capacity to provide these services, the Department may retain the advertised geotechnical services. Prequalification in the area of Geotechnical Services is not required to be identified in the Consultant's Response to Announcement.

XIII. TRAFFIC ENGINEERING

The Department will provide all traffic projections and related information.

The selected Consultant will provide the analysis of the existing and proposed operations. Traffic Signal Design and Lighting Design services, if necessary for the completion of Final Design, may be added by Contract Modification at the appropriate time. At any time, if the Department has the capacity to provide these services, the Department may retain the advertised traffic services.

XIV. UTILITIES

The Consultant will authorize B.U.D. (Before You Dig) to field-locate utilities during final design. The consultant shall perform field surveys to collect the B.U.D. data. Horizontal location of existing utilities shown on final plans shall be adjusted as necessary to reflect actual B.U.D.

locates.

The selected Consultant shall acquire adequate information regarding existing utility features to determine or assist the Cabinet in determining the extent to which potentially impacted utilities may impact the project budget or schedule. The selected Consultant should be aware of and bring attention to any potential utility impacts that may result in significant cost or time to relocate.

XV. PREQUALIFICATION REQUIREMENTS

To respond to this project the Consultant must be prequalified in the following areas by the response due date of this advertisement:

ENVIRONMENTAL AQUATIC & TERRESTRIAL ECOSYSTEMS ANALYSIS

- Fisheries
- Botany
- Terrestrial Zoology
- Wetlands
- Freshwater Macroinvertebrates
- Water Quality

ENVIRONMENTAL ARCHEOLOGY & OTHER SERVICES

- Prehistoric Archaeology
- Socio-Economic Analysis
- Highway Noise Analysis
- Historic Archaeology
- Environmental Document Writing & Coordination
- Cultural-Historic Analysis
- *Stream & Wetland Mitigation* (see note below)*

ROADWAY DESIGN

- Rural Roadway Design
- Surveying
- Advanced Drainage Analysis & Design
- Urban Roadway Design

Environmental & UST Services* (see note below)

- *UST & Hazmat Preliminary Site Assessment (Phase 1)**
- *UST Closure Assessment**
- *Hazmat Corrective Action**
- *UST Site Investigation (Phase 2)**
- *Hazmat Site Investigation (Phase 2)**
- *UST Corrective Action**

Geotechnical Services* (see note below)

- *Geotechnical Engineering**
- *Geotechnical Drilling**
- *Geotechnical Laboratory Testing**

Structure Design* (see note below)

- *Spans Under 500 Feet**

Traffic Engineering* (see note below)

- Electrical Engineering Roadway Lighting*
- Traffic Engineering*
- Electrical Engineering Traffic Signals*

* Note – These prequalifications are not required with the initial proposal as it is uncertain to the extent practicable if they are necessary. Should these services become necessary during the delivery of the project in this or future phases, the selected Consultant team must obtain the required qualifications before providing those services or bring on a prequalified subconsultant at that time.

XVI. PROCUREMENT SCHEDULE

Dates other than Response Date are tentative and provided for information only.

- Advertisement Date: April 9, 2024
- Response Date: May 1, 2024 by 4:30 PM ET (Frankfort Time)
- First Selection Meeting: May 6, 2024
- Final Selection: May 22, 2024
- Pre-Design Conference: May 29, 2024
- Consultant Fee Proposal: June 7, 2024
- Contract Negotiations: June 19, 2024
- Notice to Proceed: July 10, 2024

XVII. PROJECT SCHEDULE

- Public Meeting to Present Alternatives May 15, 2025
- Preliminary Line and Grade Inspection August 15, 2025

XVIII. EVALUATION FACTORS

Consultants will be evaluated by the selection committee based on the following weighted factors:

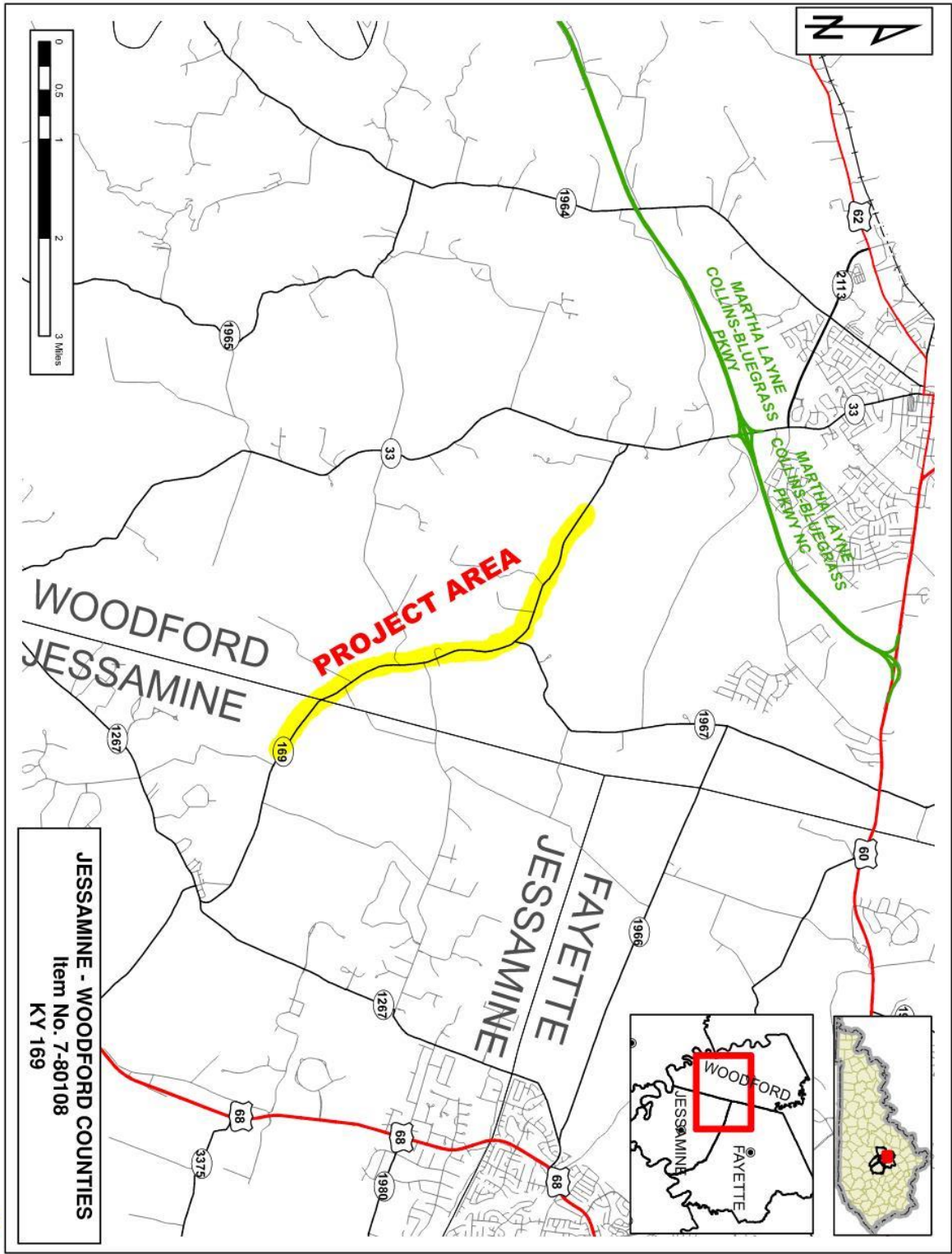
1. Project approach and proposed procedures to accomplish the services for the project. (20 Points)
2. Relative experience of consultant personnel assigned to project team with highway project for KYTC and/or federal, local or other state governmental agencies. (15 Points)
3. Past record of performance on projects similar in type and complexity. (15 Points)
4. Capacity to comply with project schedule. (10 Points)
5. Knowledge of the locality and familiarity of the general geographic area. (2 Points)

XIX. SELECTION COMMITTEE MEMBERS

1. Robin Sprague, P.E., User Division
2. Adam Ulrich, P.E., User Division
3. Amanda Desmond, P.E., Secretary's Pool
4. Emily Deason, P.E., Secretary's Pool
5. Marcelyn Mathews, P.E., Governor's Pool

XX. AREA MAP

Disclaimer: KYTC provides this map as a reference only. Users are to validate information independently.
 Copyright: 2023 Kentucky Transportation Cabinet. All rights reserved.



JESSAMINE - WOODFORD COUNTIES
 Item No. 7-80108
 KY 169

Date: 12/19/2023